



SERVOTEC FULLY AUTOMATIC UNIVERSAL TESTING MACHINE 100kN (TWIN COLUMN)

Standard: BS EN 10002-1, ISO 7500-1, ASTM A370

Tensile & Compression

TT Servotec Fully Automatic Universal Testing Machine out tester adopts DC speed regulating servomotor & reduction gears as the power source. Its real time displays test data & test status with LCD module. Professional designed servo control system realizes the PWM pulse width modulation control mode. It really comes up to with test speed closed loop control mode. It is controlled by single chip automatically control.

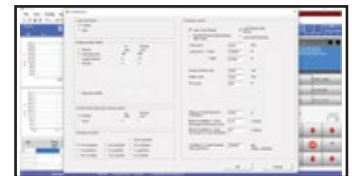
Main Use & Range

Used for measurement & test of mechanical property & analytical study of metal, non-metal & composite material, such as aviation, petrochemical, machinery manufacture, wire, cable, textile, fibre, plastic, rubber, ceramic, food, medicine packaging, aluminium plastic tube, plastic door & window, geo-textile, film, wood, paper, metal material & manufacture industry & etc.

It can record the max. test force, fracture value, yield value, max. compression value automatically. It can also calculate the fracture extension & all kind of strength value manually. The RA232 connector can do the function of communicating with computer to do the data work. It is an essential equipment for manufacture, construction unit, product quality supervision & inspection bureau & building material test department. It also could be used in the university for teaching purpose.



Test Curve Page



User Setting Page



Test Result Page

Features:-

Testable Items

General test item:

(General display value and calculated value)

- Tensile stress
- Tensile strength
- Pulling strength
- Stable tensile stress
- Constant stress force value
- Tear off the elongation
- Constant stress elongation

- Tear strength
- Any point force value
- Any point elongation
- Extraction
- Computation of adhesion and peak value
- Pressure test
- Bending test
- Adhesive force stripping force test
- Extraction force piercing force test
- Cycle test

Main Technical Parameter :

Model Number	TT 6000 X / 018N
Max Test Force	100kN
Structure Type	Twin Rigid Column with Twin High Precision Ball Screw
Traveling Space	950 mm (exclude fixtures)
Width Space	440 mm
Test Force Accuracy	±0.5%
Test Speed Range	0.1-500mm/min
Load Resolution	1/100 000
Displacement Resolution	1/1000
Displacement Accuracy	≤0.5%
Resolution of Metal Extenders	1/1000
Accuracy of Metal Extenders	≤0.5%
Accuracy of Extenders	±1 mm
Measuring Range	0.5% - 100% Full Scale
Load Unit	Gf, kgf, N, kN, Lbf, etc.
Curve Display	Selectable Axial Parameters: Y-axis - time, load, displacement, deformation, stress, strain. X-axis - time, load, displacement, deformation, stress, strain.
Data Display	Max. Force, Speed, Specimen Detail, Strength (Kpa, Mpa, N/mm, Nmm)
Main Drive Unit	Precision Servo Drive & Servo Motor
Safety Feature	Emergency Stop, Overload Protection, Upper & Lower Limit Switch
	Load Sensor with Auto Retreat
Power Source	220 ~ 240 V, 2200 W, 15 A, 1 Ph, 50 / 60 Hz
Product Dimension	780(L) x 600(W) x 1820(H) mm
Packing Dimension	880(L) x 700(W) x 1920(H) mm
Approx Weight	460 kg

Unit Consists Of :

Model Number	Parts Description	Qty
TT LC – 100kNC	100kN High Precision Load Cell (Cell Type)	1 Unit.
TT 6ST – G04	Mechanical Wedge Clamp (0-7mm/100 kN)	1 Unit.
TT 6ST – HC1	Handheld Magnetic Control Unit	1 Unit.
TT 6ST – PC1	Desktop Computer Unit c/w Operation and the Software	1 Unit.

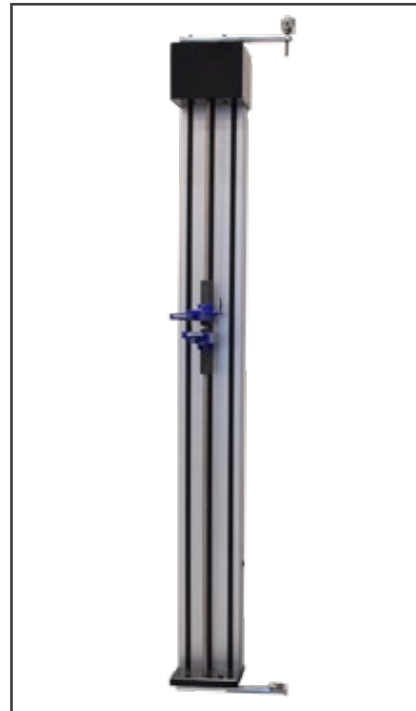
Optional Accessories :

Model Number	Parts Description	Qty
TT 6ST – CTS	Cycle Test Software	1 No.
TT AEX – 25/10	Axial Electronic Extensometer (GL25/D10)	1 No.
TT AEX – 50/25	Axial Electronic Extensometer (GL50/D25)	1 No.
TT AEX – 100/25	Axial Electronic Extensometer (GL100/D25)	1 No.
TT 6ST – LTX-3	Long Travel Electronic Extensometer (LTX-3)	1 No.
TT CP – 200	Computer Printer	1 No.
TT 6ST – PBU	Portable Bench Unit	1 No.

*1 Copy of Manual Instruction



Axial Electronic Extensometer



Long Travel Electronic Extensometer



Desktop Computer Unit



Computer Printer